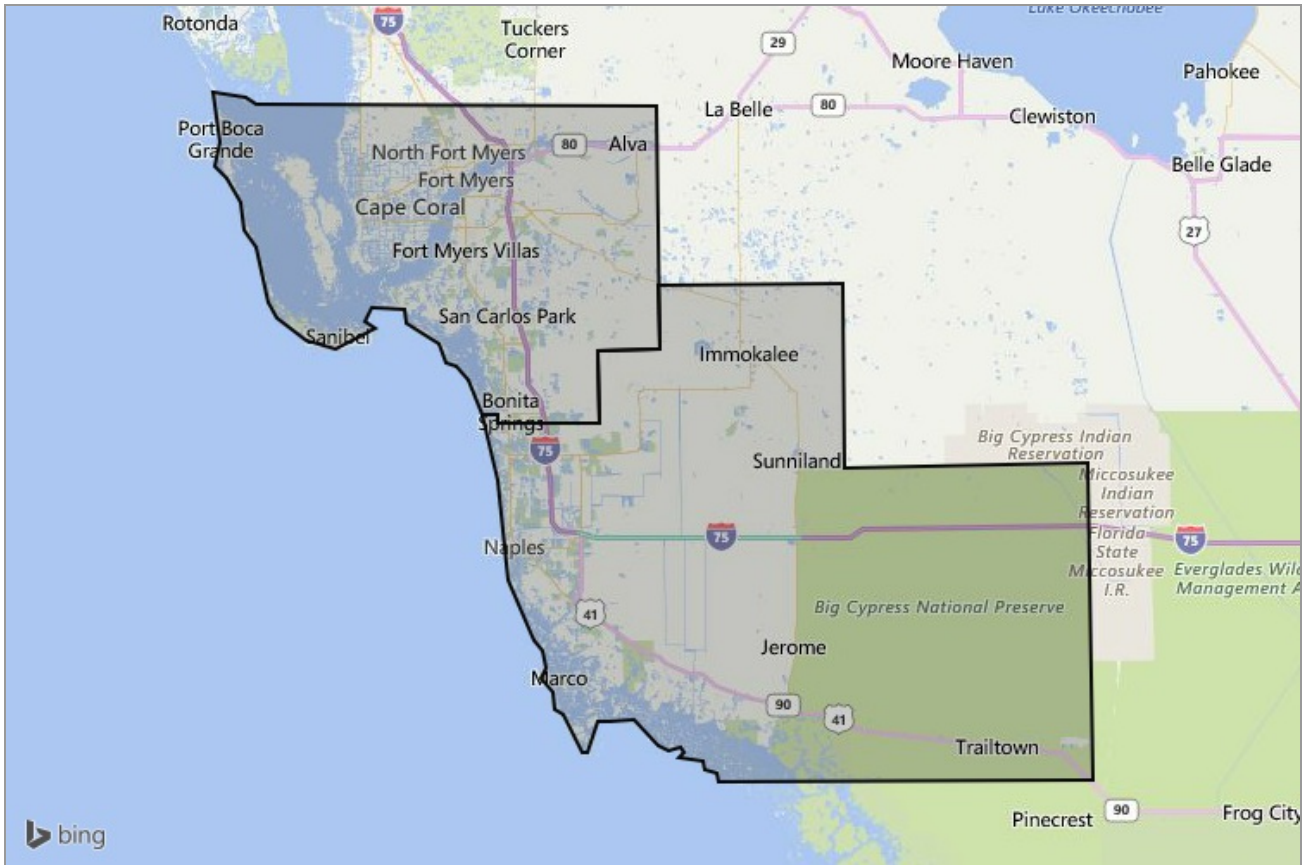




MARKET DATA REPORT

Monthly Market Data Report



Report Characteristics

Report Name:
Monthly Market Data Report

Report Date Range:
5/2015 – 5/2016

Filters Used:
Location

Avg/Med: Avg Only

Include Metrics By: County

Run Date: 06/09/2016

Scheduled: Yes

Presented by

Bonita Springs-Estero Association of REALTORS®

Florida Real Estate License: 251501954

(239) 992-6771

<http://bearflorida.point2agent.com/>

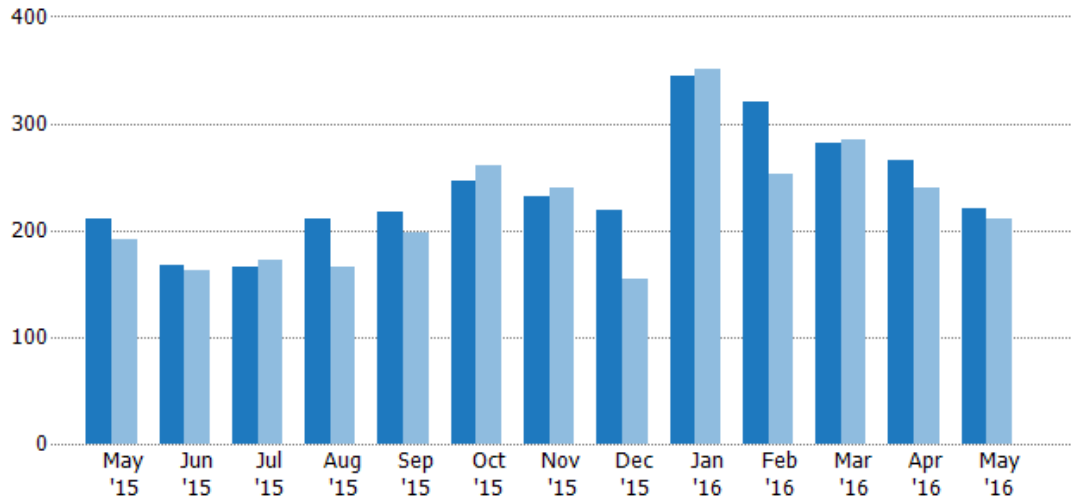
25300 Bemwood Drive
Suite 1
Bonita Springs, FL 34135



New Listings

The number of new single-family, condominium and townhome listings that were added each month.

Month/Year	Count	% Chg.
May '16	221	4.7%
May '15	211	9.9%
May '14	192	18.8%

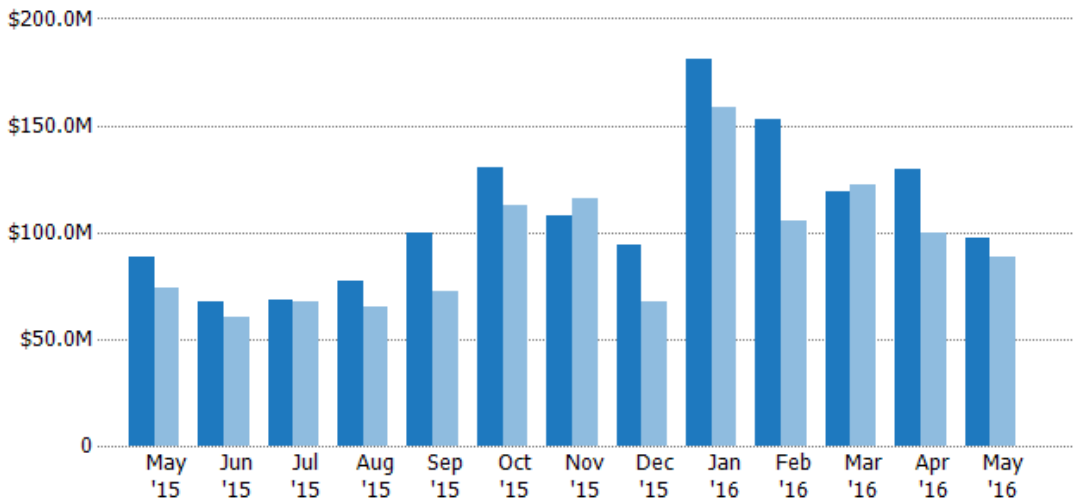


	May '15	Jun '15	Jul '15	Aug '15	Sep '15	Oct '15	Nov '15	Dec '15	Jan '16	Feb '16	Mar '16	Apr '16	May '16
Current Year	211	168	166	210	217	246	232	218	344	320	282	266	221
Prior Year	192	162	172	166	198	260	239	154	351	252	285	239	211
Percent Change from Prior Year	10%	4%	-3%	27%	10%	-5%	-3%	42%	-2%	27%	-1%	11%	5%

New Listing Volume

The sum of the listing price of single-family, condominium and townhome listings that were added each month.

Month/Year	Volume	% Chg.
May '16	\$97.5M	10%
May '15	\$88.7M	19.9%
May '14	\$73.9M	15.5%



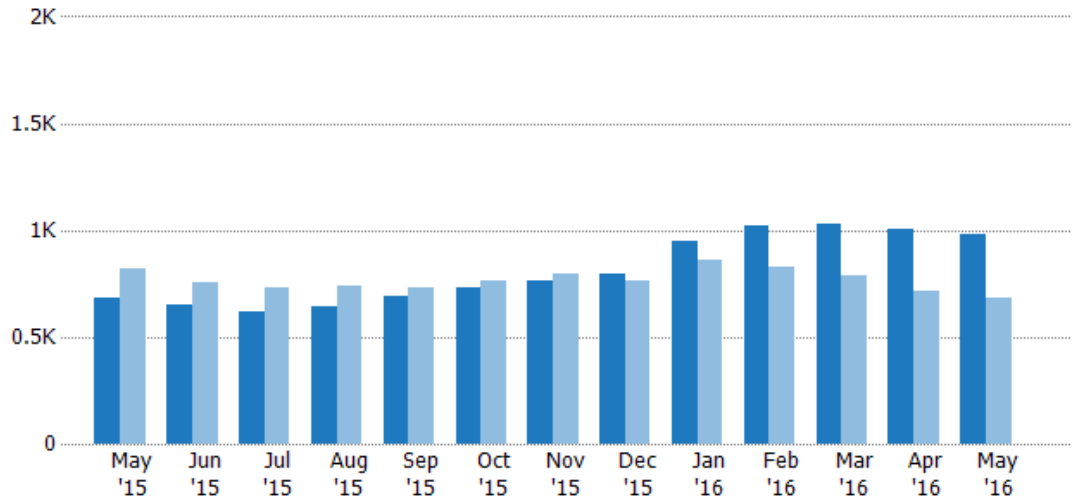
	May '15	Jun '15	Jul '15	Aug '15	Sep '15	Oct '15	Nov '15	Dec '15	Jan '16	Feb '16	Mar '16	Apr '16	May '16
Current Year	\$88.7M	\$67.2M	\$68M	\$77.1M	\$100M	\$130M	\$108M	\$93.7M	\$181M	\$153M	\$119M	\$129M	\$97.5M
Prior Year	\$73.9M	\$59.9M	\$67.1M	\$65.1M	\$72M	\$113M	\$115M	\$67.8M	\$158M	\$105M	\$122M	\$100M	\$88.7M
Percent Change from Prior Year	20%	12%	1%	18%	39%	15%	-7%	38%	15%	45%	-3%	29%	10%



Active Listings

The number of active single-family, condominium and townhome listings at the end of each month.

Month/Year	Count	% Chg.
May '16	981	43.2%
May '15	685	-16.4%
May '14	819	54.3%

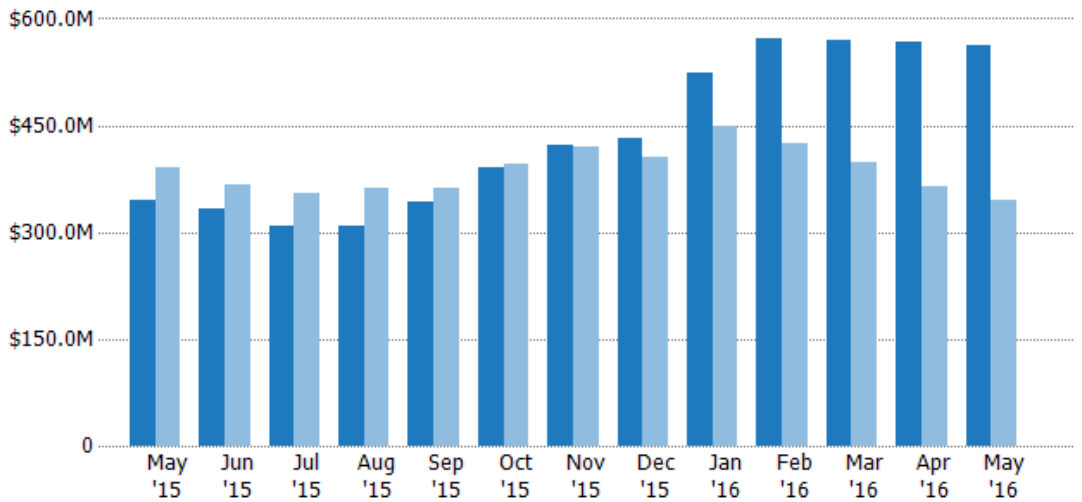


	May '15	Jun '15	Jul '15	Aug '15	Sep '15	Oct '15	Nov '15	Dec '15	Jan '16	Feb '16	Mar '16	Apr '16	May '16
Current Year	685	649	619	641	693	730	763	796	945	1.02K	1.03K	1.01K	981
Prior Year	819	753	734	742	734	765	799	762	860	827	790	712	685
Percent Change from Prior Year	-16%	-14%	-16%	-14%	-6%	-5%	-5%	4%	10%	23%	30%	42%	43%

Active Listing Volume

The sum of the listing price of active single-family, condominium and townhome listings at the end of each month.

Month/Year	Volume	% Chg.
May '16	\$562M	62.5%
May '15	\$346M	-11.6%
May '14	\$391M	50.4%



	May '15	Jun '15	Jul '15	Aug '15	Sep '15	Oct '15	Nov '15	Dec '15	Jan '16	Feb '16	Mar '16	Apr '16	May '16
Current Year	\$346M	\$332M	\$309M	\$310M	\$342M	\$392M	\$421M	\$433M	\$524M	\$571M	\$569M	\$568M	\$562M
Prior Year	\$391M	\$366M	\$355M	\$362M	\$362M	\$397M	\$421M	\$404M	\$449M	\$425M	\$398M	\$365M	\$346M
Percent Change from Prior Year	-12%	-9%	-13%	-15%	-6%	-1%	0	7%	17%	34%	43%	55%	63%

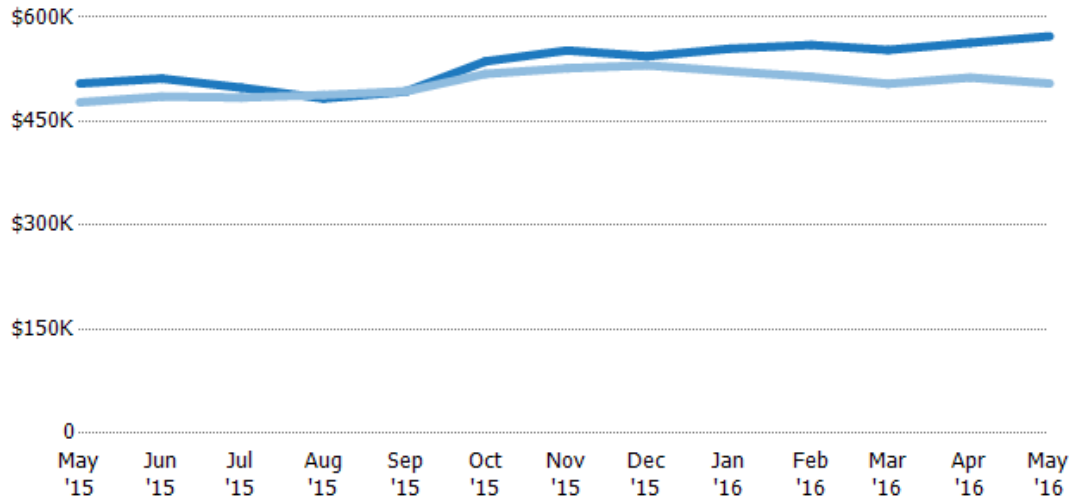




Average Listing Price

The average listing price of active single-family, condominium and townhome listings at the end of each month.

Month/Year	Price	% Chg.
May '16	\$573K	13.5%
May '15	\$505K	5.7%
May '14	\$477K	-2.6%

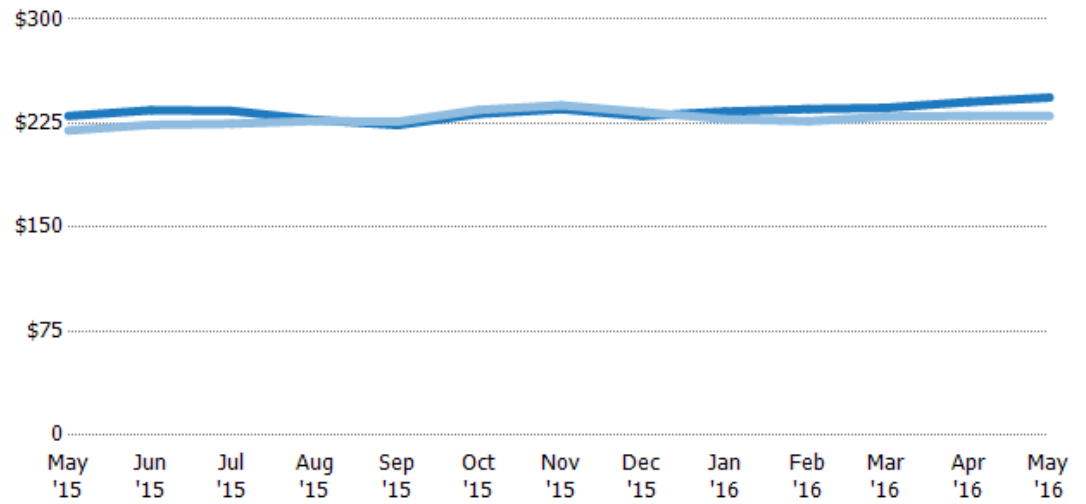


Current Year	\$505K	\$512K	\$498K	\$483K	\$493K	\$536K	\$552K	\$544K	\$555K	\$560K	\$553K	\$563K	\$573K
Prior Year	\$477K	\$486K	\$484K	\$488K	\$493K	\$518K	\$527K	\$531K	\$522K	\$514K	\$504K	\$513K	\$505K
Percent Change from Prior Year	6%	5%	3%	-1%	0	3%	5%	2%	6%	9%	10%	10%	13%

Average Listing Price per Sq Ft

The average of listing prices divided by the living area of homes on market at the end of each month.

Month/Year	Price/sq ft	% Chg.
May '16	\$244	5.8%
May '15	\$230	4.8%
May '14	\$220	-7.5%



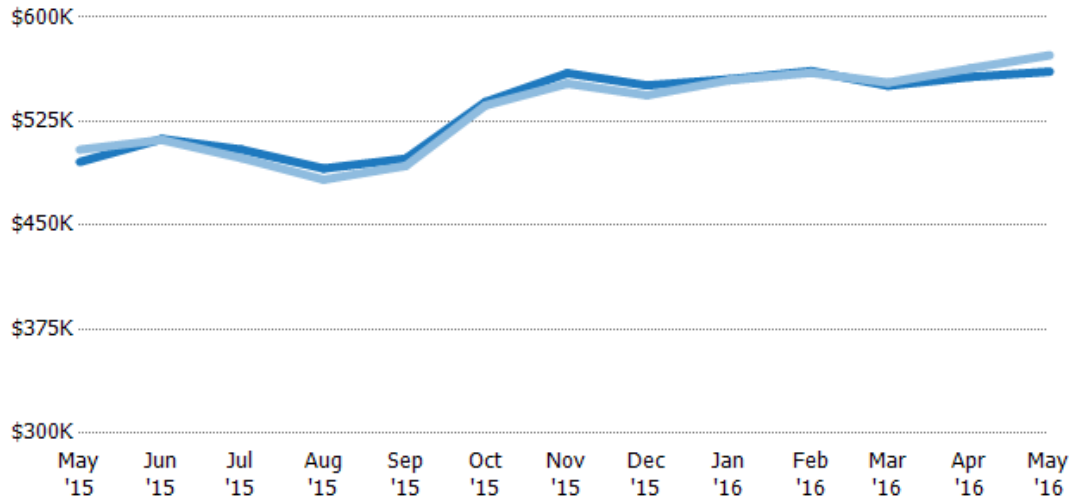
Current Year	\$230	\$234	\$234	\$227	\$224	\$232	\$235	\$230	\$233	\$235	\$236	\$240	\$244
Prior Year	\$220	\$224	\$225	\$227	\$226	\$235	\$238	\$233	\$228	\$227	\$230	\$230	\$230
Percent Change from Prior Year	5%	5%	4%	0	-1%	-1%	-1%	-1%	2%	4%	3%	4%	6%





Average Listing Price vs Average Est Value

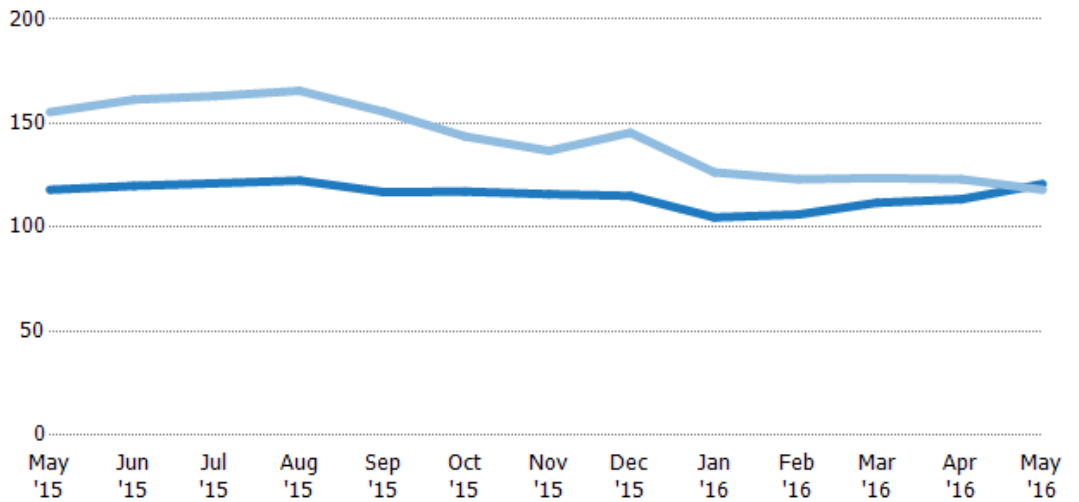
The average listing price as a percentage of the average AVM or RVM® valuation estimate for active listings each month.



	May '15	Jun '15	Jul '15	Aug '15	Sep '15	Oct '15	Nov '15	Dec '15	Jan '16	Feb '16	Mar '16	Apr '16	May '16
Avg Est Value	\$496K	\$512K	\$505K	\$491K	\$498K	\$539K	\$560K	\$551K	\$555K	\$561K	\$551K	\$557K	\$561K
Avg Listing Price	\$505K	\$512K	\$498K	\$483K	\$493K	\$536K	\$552K	\$544K	\$555K	\$560K	\$553K	\$563K	\$573K
Avg Listing Price as a % of Avg Est Value	102%	100%	99%	98%	99%	100%	99%	99%	100%	100%	100%	101%	102%

Average Days in RPR

The average number of days between when residential properties are first displayed as active listings in RPR and when accepted offers have been noted in RPR.



Month/Year	Days	% Chg.
May '16	121	2.3%
May '15	118	-24%
May '14	155	10.6%

	May '15	Jun '15	Jul '15	Aug '15	Sep '15	Oct '15	Nov '15	Dec '15	Jan '16	Feb '16	Mar '16	Apr '16	May '16
Current Year	118	120	121	122	117	117	116	115	105	106	112	113	121
Prior Year	155	161	163	166	156	144	137	145	126	123	124	123	118
Percent Change from Prior Year	-24%	-26%	-26%	-26%	-25%	-18%	-15%	-21%	-17%	-14%	-10%	-8%	2%

Average Days in RPR (By County)

The average number of days between when residential properties are first displayed as active listings in RPR and when accepted offers have been noted in RPR by county.

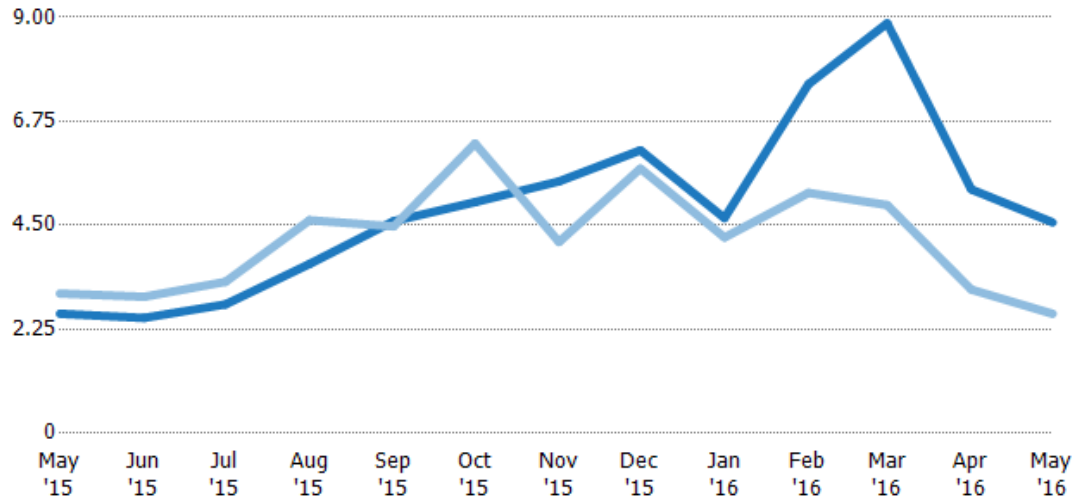




Months of Inventory

The number of months it would take to exhaust active listings at the current sales rate.

Month/Year	Months	% Chg.
May '16	4.56	76.5%
May '15	2.58	-14.5%
May '14	3.02	102.1%

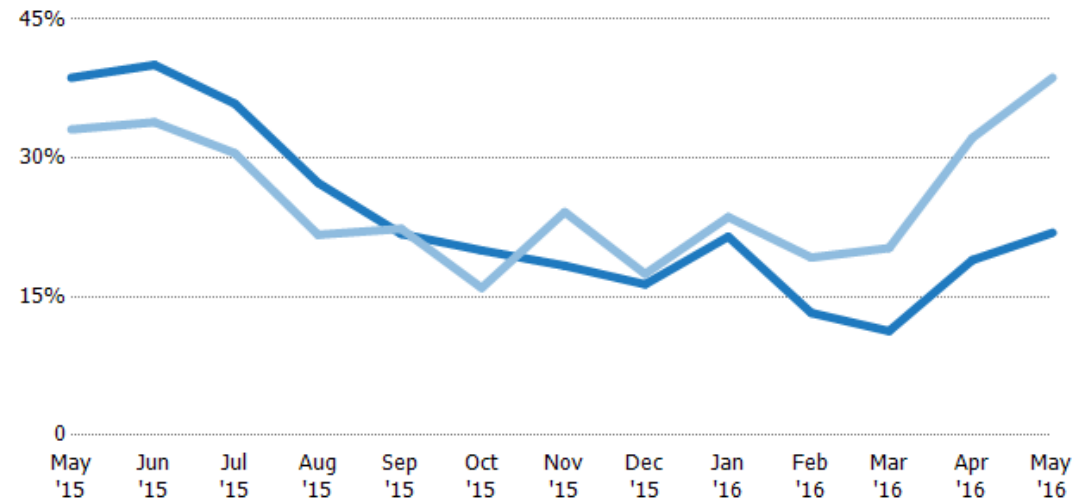


	May '15	Jun '15	Jul '15	Aug '15	Sep '15	Oct '15	Nov '15	Dec '15	Jan '16	Feb '16	Mar '16	Apr '16	May '16
Current Year	2.58	2.5	2.79	3.66	4.59	5	5.45	6.12	4.66	7.56	8.87	5.28	4.56
Prior Year	3.02	2.95	3.28	4.61	4.48	6.27	4.14	5.73	4.24	5.2	4.94	3.11	2.58
Percent Change from Prior Year	-14%	-15%	-15%	-21%	3%	-20%	32%	7%	10%	45%	80%	70%	77%

Absorption Rate

The percentage of inventory sold per month.

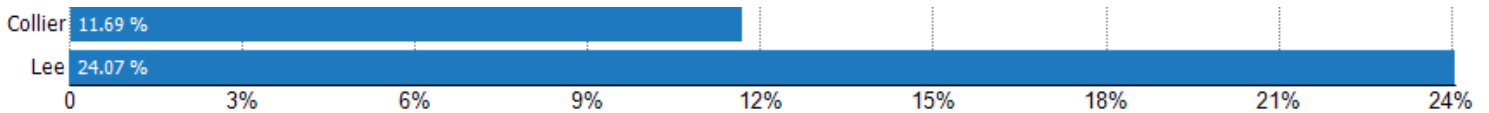
Month/Year	Rate	Chg.
May '16	22%	16.8%
May '15	39%	-5.6%
May '14	33%	-50.5%



	May '15	Jun '15	Jul '15	Aug '15	Sep '15	Oct '15	Nov '15	Dec '15	Jan '16	Feb '16	Mar '16	Apr '16	May '16
Current Year	39%	40%	36%	27%	22%	20%	18%	16%	21%	13%	11%	19%	22%
Prior Year	33%	34%	31%	22%	22%	16%	24%	17%	24%	19%	20%	32%	39%
Change from Prior Year	-6%	-6%	-5%	-6%	1%	-4%	6%	1%	2%	6%	9%	13%	17%

Absorption Rate (By County)

The percentage of the inventory sold during the last month by county.

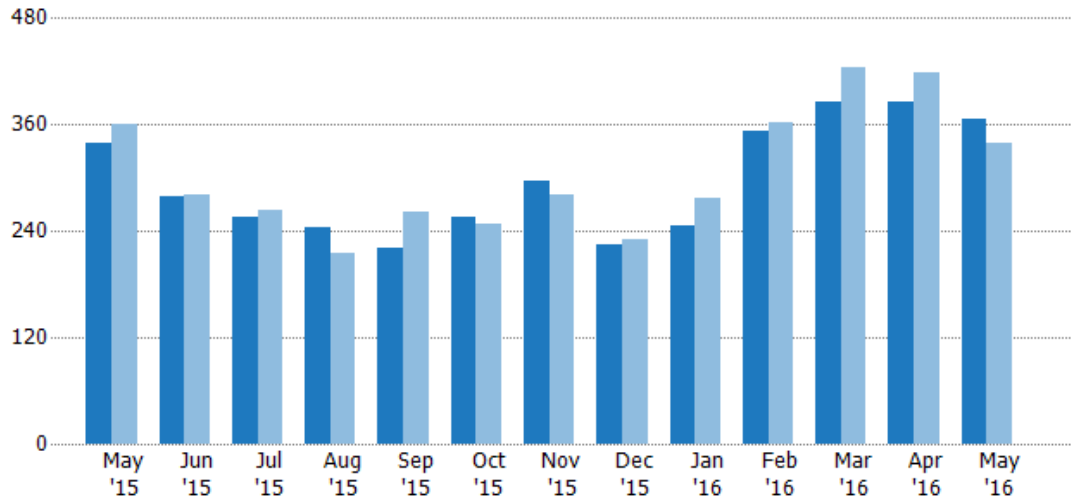




Pending Sales

The number of single-family, condominium and townhome properties with accepted offers that were available at the end each month.

Month/Year	Count	% Chg.
May '16	367	8.3%
May '15	339	-5.8%
May '14	360	-29.2%

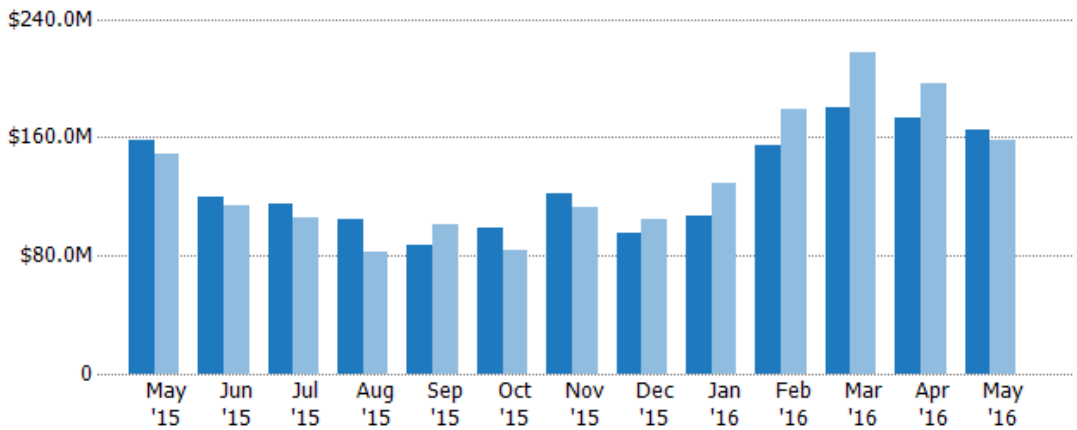


	May '15	Jun '15	Jul '15	Aug '15	Sep '15	Oct '15	Nov '15	Dec '15	Jan '16	Feb '16	Mar '16	Apr '16	May '16
Current Year	339	278	255	244	220	255	296	224	245	352	386	385	367
Prior Year	360	281	264	215	262	248	281	230	277	363	424	419	339
Percent Change from Prior Year	-6%	-1%	-3%	13%	-16%	3%	5%	-3%	-12%	-3%	-9%	-8%	8%

Pending Sales Volume

The sum of the sales price of single-family, condominium and townhome properties with accepted offers that were available at the end of each month.

Month/Year	Volume	% Chg.
May '16	\$165M	4.7%
May '15	\$158M	6.3%
May '14	\$149M	-37.8%



	May '15	Jun '15	Jul '15	Aug '15	Sep '15	Oct '15	Nov '15	Dec '15	Jan '16	Feb '16	Mar '16	Apr '16	May '16
Current Year	\$158M	\$120M	\$115M	\$105M	\$86.6M	\$98.3M	\$122M	\$95.7M	\$106M	\$155M	\$180M	\$173M	\$165M
Prior Year	\$149M	\$114M	\$106M	\$82M	\$100M	\$83.4M	\$113M	\$105M	\$129M	\$178M	\$218M	\$197M	\$158M
Percent Change from Prior Year	6%	5%	8%	28%	-14%	18%	8%	-9%	-17%	-13%	-17%	-12%	5%

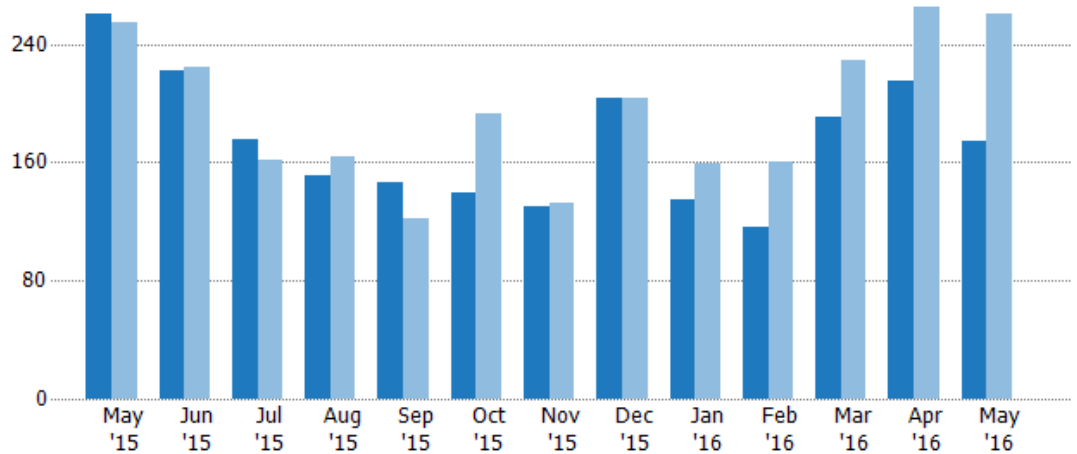




Closed Sales

The total number of single-family, condominium and townhome properties sold each month.

Month/Year	Count	% Chg.
May '16	174	-33.1%
May '15	260	2%
May '14	255	-27.5%

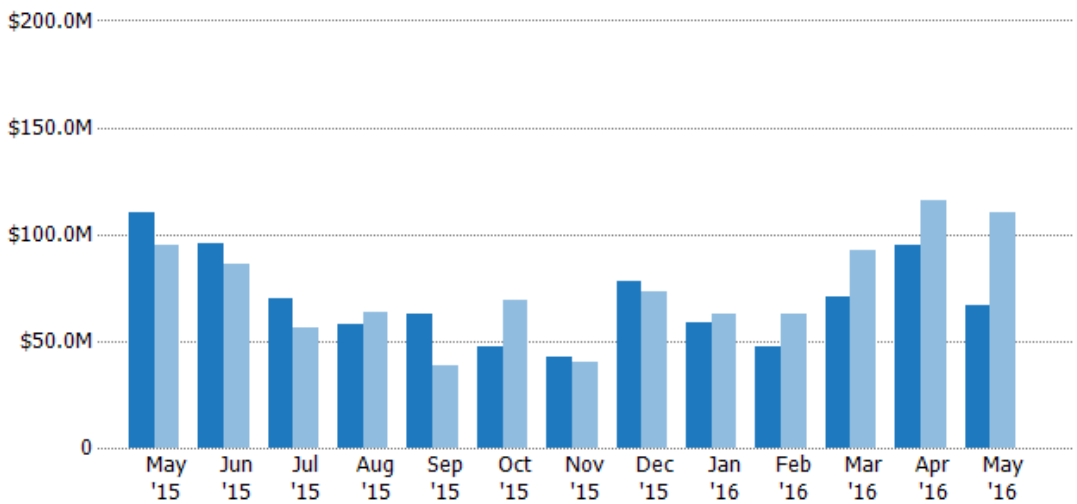


	May '15	Jun '15	Jul '15	Aug '15	Sep '15	Oct '15	Nov '15	Dec '15	Jan '16	Feb '16	Mar '16	Apr '16	May '16
Current Year	260	222	175	151	146	140	130	203	135	116	191	215	174
Prior Year	255	224	161	164	122	193	133	203	159	160	229	265	260
Percent Change from Prior Year	2%	-1%	9%	-8%	20%	-27%	-2%	0	-15%	-28%	-17%	-19%	-33%

Closed Sales Volume

The sum of the sales price of single-family, condominium and townhome properties sold each month.

Month/Year	Volume	% Chg.
May '16	\$66.8M	-39.5%
May '15	\$110M	16.2%
May '14	\$95M	-24.7%



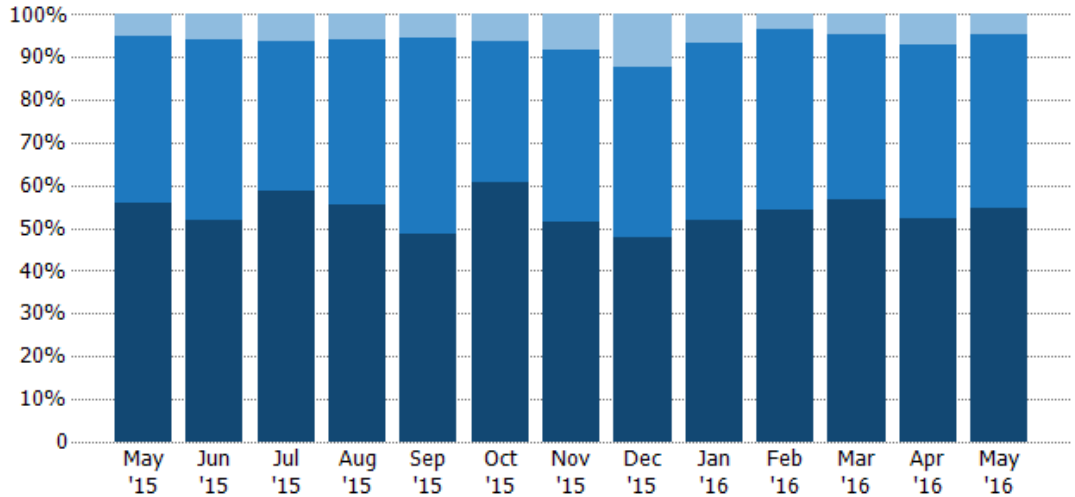
	May '15	Jun '15	Jul '15	Aug '15	Sep '15	Oct '15	Nov '15	Dec '15	Jan '16	Feb '16	Mar '16	Apr '16	May '16
Current Year	\$110M	\$95.4M	\$70.1M	\$57.8M	\$62.7M	\$47.1M	\$42.2M	\$77.9M	\$58.7M	\$47.2M	\$70.8M	\$94.6M	\$66.8M
Prior Year	\$95M	\$85.6M	\$56.1M	\$63.6M	\$38.4M	\$68.8M	\$39.8M	\$73.4M	\$62.8M	\$62.7M	\$92.4M	\$116M	\$110M
Percent Change from Prior Year	16%	11%	25%	-9%	63%	-32%	6%	6%	-7%	-25%	-23%	-19%	-40%





Closed Sales by Property Type

The percentage of single-family, condominium and townhome properties sold each month by property type.



Property Type	May '15	Jun '15	Jul '15	Aug '15	Sep '15	Oct '15	Nov '15	Dec '15	Jan '16	Feb '16	Mar '16	Apr '16	May '16
Multifamily/Multiplex	5%	6%	6%	6%	5%	6%	8%	12%	7%	3%	5%	7%	5%
Condo/Townhouse	39%	42%	35%	38%	46%	33%	40%	40%	41%	42%	39%	41%	41%
Single Family Residence	56%	52%	59%	56%	49%	61%	52%	48%	52%	54%	57%	52%	55%

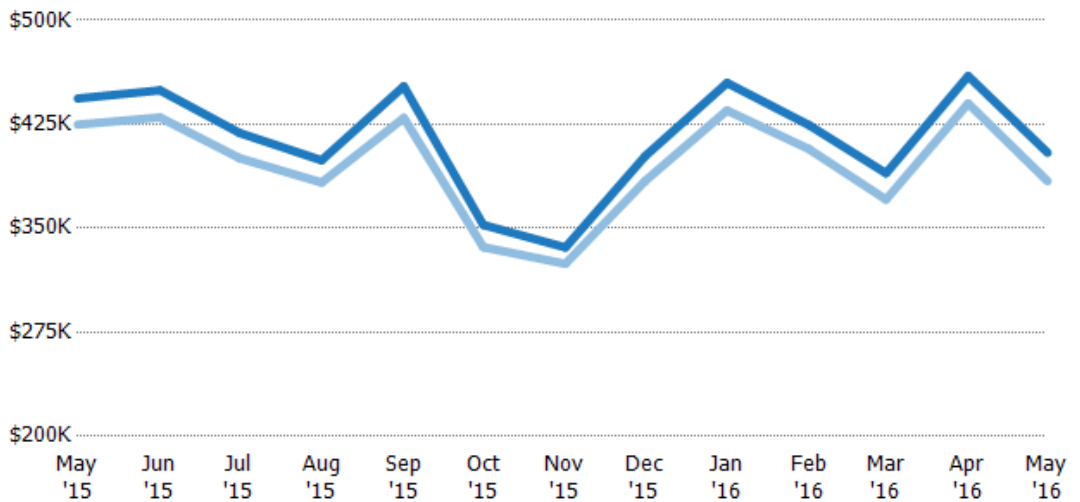
Closed Sales (By County)

The total number of single-family, condominium and townhome properties sold during the last month by county.



Average Sales Price vs Average Listing Price

The average sales price as a percentage of the average listing price for properties sold each month.



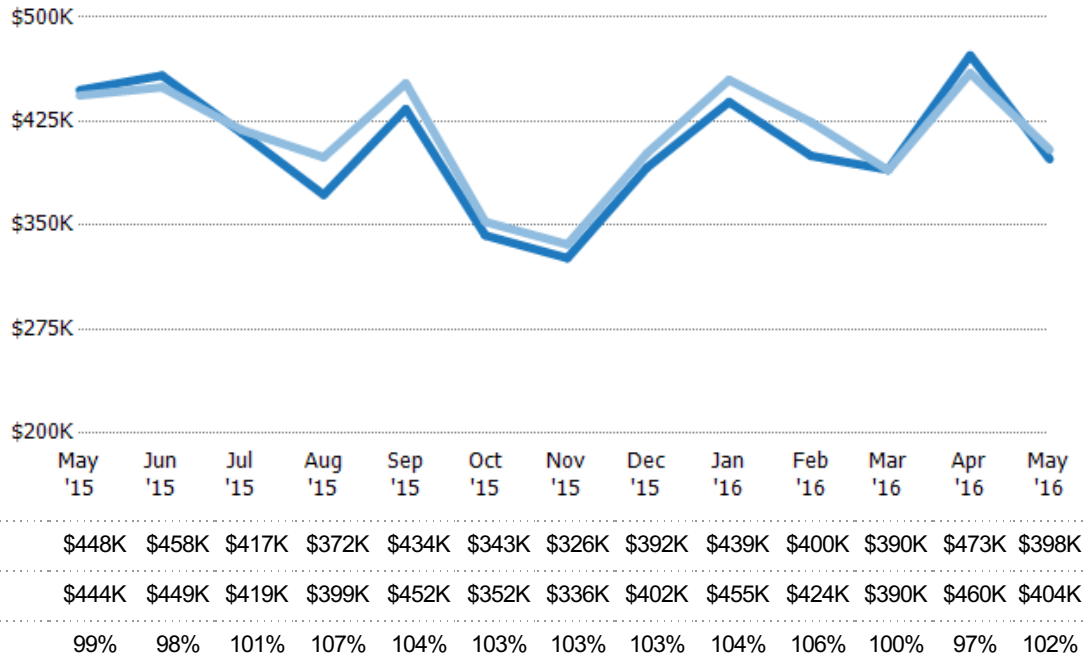
Property Type	May '15	Jun '15	Jul '15	Aug '15	Sep '15	Oct '15	Nov '15	Dec '15	Jan '16	Feb '16	Mar '16	Apr '16	May '16
Avg List Price	\$444K	\$449K	\$419K	\$399K	\$452K	\$352K	\$336K	\$402K	\$455K	\$424K	\$390K	\$460K	\$404K
Avg Sales Price	\$425K	\$430K	\$401K	\$383K	\$430K	\$336K	\$324K	\$384K	\$435K	\$407K	\$371K	\$440K	\$384K
Avg Sales Price as a % of Avg List Price	96%	96%	96%	96%	95%	95%	96%	96%	96%	96%	95%	96%	95%





Average Sales Price vs Average Est Value

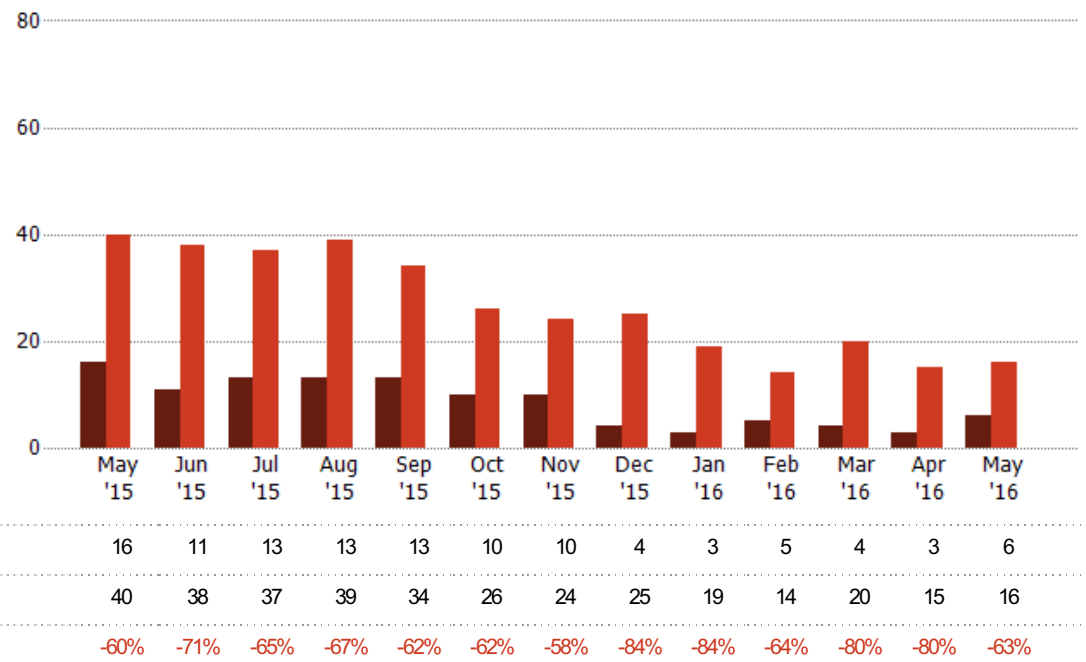
The average sales price as a percentage of the average AVM or RVM® valuation estimate for properties sold each month.



Distressed Listings

The number of distressed single-family, condominium and townhome properties that were for sale at the end of each month.

Month/Year	Count	% Chg.
May '16	6	-62.5%
May '15	16	-60%
May '14	40	97.5%



Distressed Listings (By County)

The number of distressed single-family, condominium and townhome properties that were for sale at the end of the last month by county.





Appendix

The metrics that are calculated by RPR® may show the same general trends as those published by other sources (i.e. MLS, Associations or vendors), but because of our processes and parcel-centric approach, some variation may occur. Data sources include MLS's, where licensed, and public records for more in-depth metrics on distressed properties.

Report Details

Report Name: Monthly Market Data Report
Run Date: 06/09/2016
Scheduled: Yes
Report Date Range: From 5/2015 To: 5/2016

Information Included

- Include Cover Sheet
- Include Key Metric Summary
- Include Metrics By: County
- Averages
- Include Appendix
- Medians

MLS Filter

MLS: All

Listing Filters

Property Types: All

Sales Types: All

Price Range: None

Location Filters

State: All

County: Collier County, Florida Lee County, Florida

ZIP Code: All

Listing Activity Charts

- New Listings
- Active Listings
- Average Listing Price
- Average Listing Price per Sq Ft
- Average Listing Price vs Est Value
- Average Days in RPR
- Months of Inventory
- Absorption Rate

Sales Activity Charts

- Active/Pending/Sold
- New Pending Sales
- Pending Sales
- Closed Sales
- Average Sales Price
- Average Sales Price per Sq Ft
- Average Sales Price vs Listing Price
- Average Sales Price vs Est Value

Distressed Charts

- Distressed Listings
- Distressed Sales

Data Tables Using 5/2016 data

- Listing Activity by ZIP
- Listing Activity by Metro Area
- Sales Activity by ZIP
- Sales Activity by Metro Area

